

# Playdale Playgrounds



---

## Annual Inspection

Ainstable Parish Council

Millennium Green  
Main Street, Ainstable, Cumbria,

## RPII Inspection Methodology

This document outlines the RPII position on inspections undertaken by the Inspectors listed on the RPII Register of Inspectors for Indoor Annual, Outdoor Annual, Outdoor Operational and Outdoor Routine.

Inspections are undertaken with reference to the standards listed in this preamble only; where no date for the standard is given it the date of the standard will be that current at the time of inspection with the exception of where overlap periods are granted by the standards committee when standards are updated. The information contained in reports is provided to assist the owner/operator in fulfilling their responsibilities as detailed in the relevant standard. Other standards referenced within the listed standards do not form part of the inspection.

The following standards are relevant to all installations of equipment that are publicly accessible to users; this would include public parks, pay and play parks, schools, nurseries, public houses, holiday parks, indoor play centres, farm parks etc. All equipment used or employed in publicly accessible areas should meet with the requirements of the relevant standards (listed below);

BS EN 1176 Parts 1, 2, 3, 4, 5, 6, 10 & 11 Playground equipment intended for permanent installation outdoors & indoors.

BS EN 1176 Part 7 - 'Guidance on Installation, Inspection, Maintenance and Operation' (this document gives guidance to the owners/operators of the facility on the installation, inspection, maintenance and operation of playground equipment, including ancillary items).

Domestic play equipment falls outside of the scope of BS EN 1176 and has its own standard (BS EN 71 – Safety of Toys). Where domestic equipment can be identified this will be acknowledged in the report but any comments concerning compliance within the inspection will still refer to BS EN 1176.

Other equipment that is not clearly identified as unsupervised or domestic (natural play, self-build equipment etc.) will be assessed for compliance with the relevant standard listed below:

**BS EN 15312** - Free access multi-sports equipment

**BS EN 14974** - Skateparks

**BS EN 16630** - Permanently installed outdoor fitness equipment

**BS EN 16899** - Parkour equipment (plus RPII/API guidance notes)

Annual and Post Installation inspections will take into consideration compliance with current standards and defects related to wear and vandalism. Items not listed in the report have not been included in the inspection. The inspection will cover the playground equipment and the active area up to 3.0 metres around, or the fence line if closer.

Operational inspections only take into consideration defects related to wear and vandalism. Routine visual inspections (if undertaken) relate only to the most obvious defects such as broken or missing parts, vandalism and issues created by severe weather conditions (the intention is to identify hazards created by storm damage).

The inspection is non-dismantling, non-destructive and does not include for any structural, toxicology or impact assessments defined in the standard; however, the inspector will undertake a manual test for stability and if equipment fails under manual load, or any other hazard is identified as an unacceptable risk, the owner/operator will be notified as soon as practicably possible.

The inspector will access all standing surfaces as necessary on the equipment and assess all parts up to 2.5m above the standing surface. Where it is not possible to access parts of the equipment without employing an alternative means of access the report will record the action required by the owner/operator to ensure the continued safe use of the equipment. Ancillary equipment will be assessed using the inspector's knowledge and experience of the standards named in this document to ensure as far as is reasonably practicable the continued safe use of the items concerned. The owner/operator is responsible for the overall safety of the equipment and area. Inspectors who are trained to use ladders may use them where it is safe to do so, but if members of the public are present on-site ladders may not be used to access the equipment.

The inspector will not undertake any of the following works unless specifically agreed in writing at the time of order:

Checking the depth and underlying structural integrity of any surface areas and/or carrying out any testing of impact absorbing properties of any surfaces. The identification of any corrosion, rot or other deterioration in any apparatus or equipment other than by an external inspection or the inspection of any equipment (or part thereof) that is underground. Tightening any bolts, hinges or other fixing devices on any apparatus or equipment. Assessing or inspecting any electrical installations contained on any site and/or apparatus and/or equipment. Assessing or inspecting any water supplies and/or water features and/or any associated computerised systems (including carrying out any programming).

Where planting or trees are mentioned in the report no arboricultural or horticultural assessments of toxicity, suitability or condition are undertaken; the owner/operator should have suitable inspections provided by a competent person.

The owner/operator should have a 'design risk assessment' provided by the manufacturer/designer of the area for the equipment and location in which the facility is installed.

The operator is responsible for managing risks of their provision and is required by law to carry out a 'suitable and sufficient assessment' of the risks associated with a site or activity and this inspection shall be considered as contributing to the operator's discharge of this responsibility.

The details contained within the report are a snapshot of the condition at the time of inspection only and subsequent events may affect the condition of the facility. Suggested remedial actions are based on the knowledge and experience of the inspector and/ or that of the inspection company. The owner/operator should seek the advice of the manufacturer or a competent person at all times when undertaking repairs and/or modifications to equipment.

**Table 1**

The operator is responsible for following the guidance of the relevant standards. The standards give guidance on the installation, inspection, maintenance and operation of the various types of facilities. The inspection guidance is listed in Table 1, with an indication of which parts will be included in an RPII Annual or Post-Installation Inspection. The relevant standards also contain additional parts which the operator should follow.

Inspection recommendations of relevant standards Refer to relevant standards for full text	Annual Main	RPII Annual Outdoor/ Fully enclosed Inspection
6.1 d) Overall levels of safety of equipment (see note 1)	✓	✓ [1]
6.1 d) Overall levels of safety of foundations (see note 1)	✓	✓ [1]
6.1 d) Overall levels of safety of playing surfaces (see note 2)	✓	✓ [2]
6.1 d) Compliance with the relevant parts of the standard and or risk assessment (see note 3)	✓	✓ [3]
6.1 d) Effects of weather	✓	✓
6.1 d) Presence of rot, decay or corrosion (see note 1)	✓	✓ [1]
6.1 d) Assessment of repairs made or added or replaced components (see note 4)	✓	✓ [4]
6.1 d) Excavation or dismantling/additional measures	✓	✗
6.2.1 Assessment of glass reinforced plastics (see note 5)	✓	✓ [5]
6.2.1 Inspection of one post equipment (see note 1)	✓	✓ [1]
6.2.4 Undertaking the Operators inspection protocol	✓	✗

NB: The clause numbers in table 1 are taken from BS EN 1176 - Part 7:2020. The content is equally applicable to all other relevant standards listed herein. Playgrounds contain a range of equipment from different manufacturers and installed over a number of years; operators should implement any guidance provided by the manufacturer. Item specific detail is not readily available to RPII Playground Inspectors, whose report contributes to the operator's overall Annual Main Inspection as detailed in the relevant standards.

[1] A manual test only is undertaken for stability. Wear and instability are only detectable where readily apparent without dismantling or destruction and without the use of tools, excavation or specialist equipment. Rot and corrosion are tested or with a hammer and/or steel rod. Decay in timber may exist which can only be found with specialist equipment.


[2] Only the visible condition and dimensional compliance of surface extent is considered. Neither testing of impact attenuating properties nor measurement of the thickness of bound surfaces are undertaken on RPII annual inspections.

[3] The inspection assesses compliance where this can be tested on site using manual methods without dismantling, destruction and without the use of tools or specialist equipment.

[4] The operator should use manufacturer's recommended parts, or equivalent. We are unable to verify if such parts have been used, and any subsequent change in quality or performance

[5] Visible glass fibres will be noted in reports. The operator is responsible for repairs or replacement.

# Risk Assessment Matrix

			Scores in the report are multiplication factors of Likelihood x Severity					
			Severity>>					
<b>Likelihood</b>	Very High probability, if the situation is not addressed an accident is almost certain.	5	Very High	VL (5)	L (10)	M (15)	H (20)	VH (25)
	High probability an accident is probable without any added factor.	4	High	VL (4)	L (8)	M (12)	H (16)	H (20)
	Moderate probability an incident is foreseeable.	3	Moderate	VL (3)	L (6)	L (9)	M (12)	M (15)
	Some probability, requires a combination of factors to take place.	2	Low	VL (2)	VL (4)	L (6)	L (8)	L (10)
	No significant probability; lightning strike, freak accident.	1	Very Low	VL (1)	VL (2)	VL (3)	VL (4)	VL (5)
			Very Low	Low	Moderate	High	Very High	
			1	2	3	4	5	
			No injury likely e.g. damaged or soiled clothing, minor bruising, grazes	Minor injury, laceration or bruising requiring first aid only	Injury requiring medical intervention e.g. cuts requiring stitches	Serious injury including concussions or fracture of long bones	Severe injury involving a potential life changing injury or fatality	
			Severity>>					
			<p>Note 1: The total risk scores included within our reports are a multiplication factor of the calculated Likelihood and Severity of each finding. Both Likelihood and Severity are given a number between 1 - 5 as shown on the matrix above and these two numbers are then multiplied together to give the total risk score that is shown against defects on the report. Total risk scores can be divided in both directions, i.e. a total risk score of 12 could be a Likelihood (3) x Severity (4) or Likelihood (4) x Severity (3).</p> <p>Note 2: When we inspect we only see a snapshot of the current condition of the equipment. It is the operators responsibility to ensure that there is a continuing level of maintenance to keep the equipment in good working order and the site fit for use.</p>					

## Millennium Green

Inspection Ref: 1413783

Site Ref: 18276

Inspected: 8-July-2021 - 16:26 by Andrew Parkinson

Risk Assessment: 8 Low Risk



**Location:**

The site is partially overlooked by properties in the local community

**Disabled Access:**

Generally accessible; an area accessible to most.

**8 - Low Risk**

**Item:** Basket Swing - Type 1  
**Manufacturer:** Playdale Playgrounds Ltd  
**Surface Type:** Grass Matrix Tiles  
**Item Quantity:** 1  
**Equipment Compliance:** No  
**Surface Area Compliance:** No

**Total Findings:** 8



**Finding 1**

Swings of this design are recommended to have a secondary safety mechanism fitted to prevent collapse of the seat - Consider providing a secondary safety mechanism

**Finding 3**

The grass mats are silted up and the soil is compacted; this may have an effect on the impact absorbing properties of the surface - Consider lifting and relaying the mats or test impact absorbing properties to ensure the correct surface qualities are maintained for the equipment

**Finding 5**

The shackles are showing wear - Grease the shackles (Done) and monitor for further deterioration

**Finding 7**

The seat is starting to show its age - Monitor use

**Finding 2**

The openings between the slots in the Basket Seat form finger entrapments; whilst the swing is in motion - Monitor Use

**Finding 4**

Fixing Pins have been installed in the impact area - Remove pins from impact area

**Finding 6**

There is some evidence of rot in a leg - Monitor use

**Finding 8**

The large chain links are wearing, which may require attention next year - Monitor for any further deterioration

**i** 5 - Very Low Risk

**Item:** Net Climber  
**Manufacturer:** Playdale Playgrounds Ltd  
**Surface Type:** Grass  
**Item Quantity:** 1  
**Equipment Compliance:** Yes  
**Surface Area Compliance:** Yes



**Total Findings:** 3

**Finding 1**

The web net is in satisfactory condition - See below

**Finding 2**

The step-up logs are starting to show rot - Monitor use

**Finding 3**

The net is starting to showing signs of wear and slight damage - Monitor for further deterioration

**i** 6 - Low Risk

**Item:** Log Walk  
**Manufacturer:** Playdale Playgrounds Ltd  
**Surface Type:** Grass  
**Item Quantity:** 24  
**Equipment Compliance:** Yes  
**Surface Area Compliance:** Yes



**Total Findings:** 2

**Finding 1**

3no logs are rotten in the middle - Replace the rotten logs

**Finding 2**

Some logs are showing slight rot - Monitor for any further deterioration

**i** 4 - Very Low Risk

**Item:** Intertwine  
**Manufacturer:** Playdale Playgrounds Ltd  
**Surface Type:** Grass  
**Item Quantity:** 1  
**Equipment Compliance:** Yes  
**Surface Area Compliance:** Yes



**Total Findings:** 2

**Finding 1**

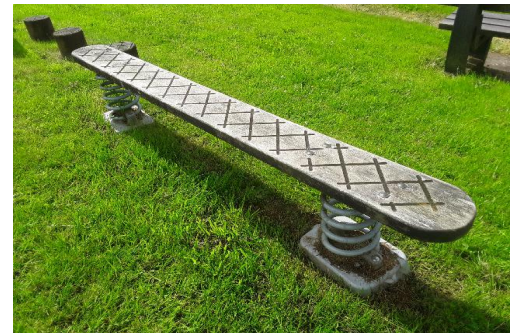
The intertwine is in satisfactory condition - See below

**Finding 2**

There is some evidence of rot in the timber - Monitor use

**i** 2 - Very Low Risk

**Item:** Wobble Board  
**Manufacturer:** Playdale Playgrounds Ltd  
**Surface Type:** Grass  
**Item Quantity:** 1  
**Equipment Compliance:** Yes  
**Surface Area Compliance:** Yes



**Total Findings:** 1

**Finding 1**

The wobble board is in satisfactory condition - None required



**i** 4 - Very Low Risk

**Item:** Stilts  
**Manufacturer:** Playdale Playgrounds Ltd  
**Surface Type:** Grass  
**Item Quantity:** 4  
**Equipment Compliance:** Yes  
**Surface Area Compliance:** Yes



**Total Findings:** 2

**Finding 1**

The stilts are in satisfactory condition - See below

**Finding 2**

A stilt is showing rot - Monitor use

**i** 2 - Very Low Risk

**Item:** Balance Beam  
**Manufacturer:** Playdale Playgrounds Ltd  
**Surface Type:** Grass  
**Item Quantity:** 2  
**Equipment Compliance:** Yes  
**Surface Area Compliance:** Yes



**Total Findings:** 1

**Finding 1**

The twin balance beam is in satisfactory condition - None required

**i** 2 - Very Low Risk

**Item:** Bridge  
**Manufacturer:** Playdale Playgrounds Ltd  
**Surface Type:** Grass  
**Item Quantity:** 1  
**Equipment Compliance:** Yes  
**Surface Area Compliance:** Yes



**Total Findings:** 1

**Finding 1**

The mini-suspension bridge is in satisfactory condition - None required

**i** 5 - Very Low Risk

**Item:** Burma Bridge  
**Manufacturer:** Playdale Playgrounds Ltd  
**Surface Type:** Grass  
**Item Quantity:** 1  
**Equipment Compliance:** Yes  
**Surface Area Compliance:** Yes



**Total Findings:** 3

**Finding 1**

A strainer pole is rotten - Replace the rotten pole

**Finding 2**

The bottom rope is showing slight damage, and signs of wear - None required

**Finding 3**

There is some evidence of rot in the timber - Monitor use

**i** 5 - Very Low Risk

**Item:** Spring Horse  
**Manufacturer:** Ledon  
**Surface Type:** Grass  
**Item Quantity:** 1  
**Equipment Compliance:** No  
**Surface Area Compliance:** Yes



**Total Findings:** 2

**Finding 1**

The ends of the footrests fail to meet the dimension requirements of BS EN 1176 - Monitor use

**Finding 2**

The spring horse is in satisfactory condition - None required

**i** 5 - Very Low Risk

**Item:** Spring Motorbike  
**Manufacturer:** Ledon  
**Surface Type:** Grass  
**Item Quantity:** 1  
**Equipment Compliance:** No  
**Surface Area Compliance:** Yes



**Total Findings:** 2

**Finding 1**

The footrests fail dimension requirements - Monitor use

**Finding 2**

The Springer is in satisfactory condition - None required

**i** 2 - Very Low Risk

**Item:** Train  
**Manufacturer:** Playdale Playgrounds Ltd  
**Surface Type:** Grass  
**Item Quantity:** 1  
**Equipment Compliance:** Yes  
**Surface Area Compliance:** Yes



**Total Findings:** 1

**Finding 1**

The train is in satisfactory condition - None required

**i** 5 - Very Low Risk

**Item:** Seating Area  
**Manufacturer:** Unknown  
**Surface Type:** Concrete  
**Item Quantity:** 2  
**Equipment Compliance:** N/A  
**Surface Area Compliance:** N/A



**Total Findings:** 2

**Finding 1**

The seats are in good condition - See below

**Finding 2**

A seat is slightly loose on its ground fixings - Monitor for further deterioration

**i** 3 - Very Low Risk

**Item:** Litter Bin  
**Manufacturer:** Unknown  
**Surface Type:** Concrete  
**Item Quantity:** 1  
**Equipment Compliance:** N/A  
**Surface Area Compliance:** N/A



**Total Findings:** 2

**Finding 1**

The bin is in satisfactory condition - See below

**Finding 2**

The bin is showing slight damage - Monitor

**i** 2 - Very Low Risk

**Item:** Gate  
**Manufacturer:** Unknown  
**Surface Type:** Crushed Stone  
**Item Quantity:** 1  
**Equipment Compliance:** N/A  
**Surface Area Compliance:** N/A



**Total Findings:** 1

**Finding 1**

The gate is in satisfactory condition - None required

**i** 8 - Low Risk

**Item:** Site General  
**Manufacturer:** Unknown  
**Surface Type:** N/A  
**Item Quantity:** 1  
**Equipment Compliance:** N/A  
**Surface Area Compliance:** N/A

**Total Findings:** 5



**Finding 1**

It is recommended that information signs with emergency contact details are installed at each entrance/exit point to the playground - Provide in accordance with the recommendations set out in BS EN 1176, also mentioning the beck as a water hazard

**Finding 3**

The path is becoming over grown - Remove the weeds

**Finding 5**

Part of the wall is becoming unstable - Repair as required

**Finding 2**

The play area entrance is not obvious from the road - Consider a warning signage

**Finding 4**

The covering on the bottom of the poles may cause rot, due to been damp. N.B Stimmer damage can also lead to rot - Monitor for deterioration of the poles

## Findings information

**i** 6 - Low Risk (Finding 1)

**Item:** Swings - Basket Swing - Type 1  
**Manufacturer:** Playdale Playgrounds Ltd

**Risk Level:** L - Low Risk  
**Surface:** Grass Matrix Tiles



**Finding:** Swings of this design are recommended to have a secondary safety mechanism fitted to prevent collapse of the seat  
**Action:** Consider providing a secondary safety mechanism

**i** 5 - Very Low Risk (Finding 2)

**Item:** Swings - Basket Swing - Type 1  
**Manufacturer:** Playdale Playgrounds Ltd

**Risk Level:** V - Very Low Risk  
**Surface:** Grass Matrix Tiles



**Finding:** The openings between the slots in the Basket Seat form finger entrapments; whilst the swing is in motion  
**Action:** Monitor Use

**i** 8 - Low Risk (Finding 3)

**Item:** Swings - Basket Swing - Type 1  
**Manufacturer:** Playdale Playgrounds Ltd

**Risk Level:** L - Low Risk  
**Surface:** Grass Matrix Tiles



**Finding:** The grass mats are silted up and the soil is compacted; this may have an effect on the impact absorbing properties of the surface  
**Action:** Consider lifting and relaying the mats or test impact absorbing properties to ensure the correct surface qualities are maintained for the equipment



**i** 8 - Low Risk (Finding 4)

**Item:** Swings - Basket Swing - Type 1  
**Manufacturer:** Playdale Playgrounds Ltd

**Risk Level:** L - Low Risk  
**Surface:** Grass Matrix Tiles



**Finding:** Fixing Pins have been installed in the impact area **Action:** Remove pins from impact area

**i** 5 - Very Low Risk (Finding 5)

**Item:** Swings - Basket Swing - Type 1  
**Manufacturer:** Playdale Playgrounds Ltd

**Risk Level:** V - Very Low Risk  
**Surface:** Grass Matrix Tiles



**Finding:** The shackles are showing wear **Action:** Grease the shackles (Done) and monitor for further deterioration

**i** 3 - Very Low Risk (Finding 6)

**Item:** Swings - Basket Swing - Type 1  
**Manufacturer:** Playdale Playgrounds Ltd

**Risk Level:** V - Very Low Risk  
**Surface:** Grass Matrix Tiles



**Finding:** There is some evidence of rot in a leg

**Action:** Monitor use

**i** 4 - Very Low Risk (Finding 7)

**Item:** Swings - Basket Swing - Type 1  
**Manufacturer:** Playdale Playgrounds Ltd

**Risk Level:** V - Very Low Risk  
**Surface:** Grass Matrix Tiles



**Finding:** The seat is starting to show its age

**Action:** Monitor use

**i** 5 - Very Low Risk (Finding 8)

**Item:** Swings - Basket Swing - Type 1  
**Manufacturer:** Playdale Playgrounds Ltd

**Risk Level:** V - Very Low Risk  
**Surface:** Grass Matrix Tiles



**Finding:** The large chain links are wearing, which may require attention next year

**Action:** Monitor for any further deterioration

**i** 2 - Very Low Risk (Finding 1)

**Item:** Activity Equipment - Net Climber  
**Manufacturer:** Playdale Playgrounds Ltd

**Risk Level:** V - Very Low Risk  
**Surface:** Grass



**Finding:** The web net is in satisfactory condition

**Action:** See below

**i** 5 - Very Low Risk (Finding 2)

**Item:** Activity Equipment - Net Climber  
**Manufacturer:** Playdale Playgrounds Ltd

**Risk Level:** V - Very Low Risk  
**Surface:** Grass



**Finding:** The step-up logs are starting to show rot

**Action:** Monitor use

**i** 3 - Very Low Risk (Finding 3)

**Item:** Activity Equipment - Net Climber  
**Manufacturer:** Playdale Playgrounds Ltd

**Risk Level:** V - Very Low Risk  
**Surface:** Grass



**Finding:** The net is starting to showing signs of wear and slight damage

**Action:** Monitor for further deterioration

**i** 6 - Low Risk (Finding 1)

**Item:** Activity Equipment - Log Walk  
**Manufacturer:** Playdale Playgrounds Ltd

**Risk Level:** L - Low Risk  
**Surface:** Grass



**Finding:** 3no logs are rotten in the middle

**Action:** Replace the rotten logs

**i** 3 - Very Low Risk (Finding 2)

**Item:** Activity Equipment - Log Walk  
**Manufacturer:** Playdale Playgrounds Ltd

**Risk Level:** V - Very Low Risk  
**Surface:** Grass



**Finding:** Some logs are showing slight rot

**Action:** Monitor for any further deterioration

**i** 2 - Very Low Risk (Finding 1)

**Item:** Activity Equipment - Intertwine  
**Manufacturer:** Playdale Playgrounds Ltd

**Risk Level:** V - Very Low Risk  
**Surface:** Grass



**Finding:** The intertwine is in satisfactory condition

**Action:** See below

**i** 4 - Very Low Risk (Finding 2)

**Item:** Activity Equipment - Intertwine  
**Manufacturer:** Playdale Playgrounds Ltd

**Risk Level:** V - Very Low Risk  
**Surface:** Grass



**Finding:** There is some evidence of rot in the timber

**Action:** Monitor use

**i** 2 - Very Low Risk (Finding 1)

**Item:** Rocking Equipment - Wobble Board  
**Manufacturer:** Playdale Playgrounds Ltd

**Risk Level:** V - Very Low Risk  
**Surface:** Grass



**Finding:** The wobble board is in satisfactory condition

**Action:** None required

**i** 2 - Very Low Risk (Finding 1)

**Item:** Activity Equipment - Stilts  
**Manufacturer:** Playdale Playgrounds Ltd

**Risk Level:** V - Very Low Risk  
**Surface:** Grass



**Finding:** The stilts are in satisfactory condition

**Action:** See below



**i** 4 - Very Low Risk (Finding 2)

**Item:** Activity Equipment - Stilts  
**Manufacturer:** Playdale Playgrounds Ltd

**Risk Level:** V - Very Low Risk  
**Surface:** Grass



**Finding:** A stilt is showing rot

**Action:** Monitor use

**i** 2 - Very Low Risk (Finding 1)

**Item:** Activity Equipment - Balance Beam  
**Manufacturer:** Playdale Playgrounds Ltd

**Risk Level:** V - Very Low Risk  
**Surface:** Grass



**Finding:** The twin balance beam is in satisfactory condition **Action:** None required

**i** 2 - Very Low Risk (Finding 1)

**Item:** Activity Equipment - Bridge  
**Manufacturer:** Playdale Playgrounds Ltd

**Risk Level:** V - Very Low Risk  
**Surface:** Grass



**Finding:** The mini-suspension bridge is in satisfactory condition

**Action:** None required

**i** 5 - Very Low Risk (Finding 1)

**Item:** Activity Equipment - Burma Bridge  
**Manufacturer:** Playdale Playgrounds Ltd

**Risk Level:** V - Very Low Risk  
**Surface:** Grass



**Finding:** A strainer pole is rotten

**Action:** Replace the rotten pole

**i** 3 - Very Low Risk (Finding 2)

**Item:** Activity Equipment - Burma Bridge  
**Manufacturer:** Playdale Playgrounds Ltd

**Risk Level:** V - Very Low Risk  
**Surface:** Grass



**Finding:** The bottom rope is showing slight damage, and signs of wear

**Action:** None required

**i** 4 - Very Low Risk (Finding 3)

**Item:** Activity Equipment - Burma Bridge  
**Manufacturer:** Playdale Playgrounds Ltd

**Risk Level:** V - Very Low Risk  
**Surface:** Grass



**Finding:** There is some evidence of rot in the timber

**Action:** Monitor use

**i** 5 - Very Low Risk (Finding 1)

**Item:** Rocking Equipment - Spring Horse  
**Manufacturer:** Ledon

**Risk Level:** V - Very Low Risk  
**Surface:** Grass



**Finding:** The ends of the footrests fail to meet the dimension requirements of BS EN 1176

**Action:** Monitor use

**i** 3 - Very Low Risk (Finding 2)

**Item:** Rocking Equipment - Spring Horse  
**Manufacturer:** Ledon

**Risk Level:** V - Very Low Risk  
**Surface:** Grass



**Finding:** The spring horse is in satisfactory condition

**Action:** None required

**i** 5 - Very Low Risk (Finding 1)

**Item:** Rocking Equipment - Spring Motorbike  
**Manufacturer:** Ledon

**Risk Level:** V - Very Low Risk  
**Surface:** Grass



**Finding:** The footrests fail dimension requirements

**Action:** Monitor use

**i** 3 - Very Low Risk (Finding 2)

**Item:** Rocking Equipment - Spring Motorbike  
**Manufacturer:** Ledon

**Risk Level:** V - Very Low Risk  
**Surface:** Grass



**Finding:** The Springer is in satisfactory condition

**Action:** None required

**i** 2 - Very Low Risk (Finding 1)

**Item:** Activity Equipment - Train  
**Manufacturer:** Playdale Playgrounds Ltd

**Risk Level:** V - Very Low Risk  
**Surface:** Grass



**Finding:** The train is in satisfactory condition

**Action:** None required

**i** 2 - Very Low Risk (Finding 1)

**Item:** Ancillary Items - Seating Area  
**Manufacturer:** Unknown

**Risk Level:** V - Very Low Risk  
**Surface:** Concrete



**Finding:** The seats are in good condition

**Action:** See below

**i** 5 - Very Low Risk (Finding 2)

**Item:** Ancillary Items - Seating Area  
**Manufacturer:** Unknown

**Risk Level:** V - Very Low Risk  
**Surface:** Concrete



**Finding:** A seat is slightly loose on its ground fixings

**Action:** Monitor for further deterioration

**i** 2 - Very Low Risk (Finding 1)

**Item:** Ancillary Items - Litter Bin  
**Manufacturer:** Unknown

**Risk Level:** V - Very Low Risk  
**Surface:** Concrete



**Finding:** The bin is in satisfactory condition

**Action:** See below

**i** 3 - Very Low Risk (Finding 2)

**Item:** Ancillary Items - Litter Bin  
**Manufacturer:** Unknown

**Risk Level:** V - Very Low Risk  
**Surface:** Concrete



**Finding:** The bin is showing slight damage

**Action:** Monitor

**i** 2 - Very Low Risk (Finding 1)

**Item:** Gates - Gate  
**Manufacturer:** Unknown

**Risk Level:** V - Very Low Risk  
**Surface:** Crushed Stone



**Finding:** The gate is in satisfactory condition

**Action:** None required



**i** 5 - Very Low Risk (Finding 1)

**Item:** Ancillary Items - Site General  
**Manufacturer:** Unknown

**Risk Level:** V - Very Low Risk  
**Surface:** N/A



**Finding:** It is recommended that information signs with emergency contact details are installed at each entrance/exit set out in BS EN 1176, also mentioning the beck as a water hazard

**Action:** Provide in accordance with the recommendations set out in BS EN 1176, also mentioning the beck as a water hazard

**i** 8 - Low Risk (Finding 2)

**Item:** Ancillary Items - Site General  
**Manufacturer:** Unknown

**Risk Level:** L - Low Risk  
**Surface:** N/A



**Finding:** The play area entrance is not obvious from the road

**Action:** Consider a warning signage

**i** 4 - Very Low Risk (Finding 3)

**Item:** Ancillary Items - Site General  
**Manufacturer:** Unknown

**Risk Level:** V - Very Low Risk  
**Surface:** N/A



**Finding:** The path is becoming over grown

**Action:** Remove the weeds

**i** 4 - Very Low Risk (Finding 4)

**Item:** Ancillary Items - Site General  
**Manufacturer:** Unknown

**Risk Level:** V - Very Low Risk  
**Surface:** N/A



**Finding:** The covering on the bottom of the poles may cause rot, due to been damp. N.B Stimmer damage can also lead to rot

**Action:** Monitor for deterioration of the poles

**i** 5 - Very Low Risk (Finding 5)

**Item:** Ancillary Items - Site General  
**Manufacturer:** Unknown

**Risk Level:** V - Very Low Risk  
**Surface:** N/A



**Finding:** Part of the wall is becoming unstable

**Action:** Repair as required